

AUTOCLEAR 6040

High Capacity Parcel X-ray for Explosives, Weapons & Narcotics



RealClear® reveals components of a gun, knife and bomb in real time, without lags and delays. autoScale® displays contents at Pentium 4 resolution automatically and without distortion.



User-friendly, ergonomic and fully-featured operator control panel.

Control Screening is the leading worldwide producer of fast, reliable and sophisticated X-ray, Metal and Trace Detection screening systems. Visit us at www.controlscreening.com. Ask about our mobile and cargo systems. Our advanced systems and options are often integrated, leased or rented.

The AUTOCLEAR® 6040 (featuring a 62.0 cm wide x 42.0 cm high or 24.4" wide x 16.5" high tunnel opening) is a high capacity, high penetration, heavy-duty, conveyORIZED X-ray scanner designed to inspect carry-on bags, briefcases, mail trays and parcels. Ideal for use at:

**Airports • Seaports • Courts
Customs • Corporate Facilities
Government Buildings • Postal
Checkpoints • Loading Docks
Mailrooms • Corrections Facilities
Nuclear • Access Control
Special Events • Hospitals
Rail or Bus Stations
Police Stations • Military Bases**

Features

- ➔ autoTracking® guided conveyor belt system never needs adjustment, lowering operating costs.
- ➔ autoSensing® eliminates the need for troublesome photosensors or footpad switch. Assures 100% screening of thin blades or plastique in magazines or courier envelopes, or of bag already in tunnel at start-up.
- ➔ Parcel contents are displayed at normal scale, wherever located, automatically and without distortion (autoScale®). RealClear® function reveals components of dense items in realtime without lags or delays.
- ➔ Narrower footprint enhances security and conveniently fits in elevators, 32" doorways and tight spaces; conveyor end folds up for transport.
- ➔ Features Pentium 4, 17" monitor, RealClear®, autoScale®, autoDensAlert®, autoOutline®, autoSensing®, autoCal®, 64X Smart Zoom, Lighten, Help, DensityScan, and Low Density Stripping, among other features.
- ➔ Compact version (above) or airport version with extended conveyor(s).
- ➔ Multi-Energy Color option with Organic/Inorganic Stripping is popular. TIP, Training and Image Archiving also available. autoMatalert®, option highlights suspect materials using atomic number and density.
- ➔ Interactive training and highly responsive local service. Engineered, made and rigorously tested in the USA to ISO 9001 and regulatory standards

Celebrating 65 years of excellence in design & support

AUTOCLEAR

ControlScreening.com

Scintrex® • Federal Labs® • CheckGate® • HandWand® • Dynavision® • RealClear®
U.S. Canada Europe Middle East Latin America Hong Kong Singapore

Model 6040 X-ray Specifications

Overall Dimensions: Inspection Capabilities

Tunnel Size:	154.6 cm (60.9") L x 80.9 cm (31.9") W x 126.4 cm (49.8") H
Material Penetration:	24.4" wide (62 cm)
Contrast Sensitivity:	16.5" high (42 cm)
Resolution:	L-shaped detector for 100% package screening.
Processing:	28-29 mm steel
Conveyor Speed:	Over 2 million color tones standard.
Pulling Weight:	40 AWG wire.
autoTracking®:	24-bit color processing with minimum 128 Mbytes memory;
Film Safety:	800 MHz or 2.4 GHz processor.
	48 feet per minute; 24 cm per second. Standard conveyor pictured on reverse. Extended conveyor length, Model 6040E (variable length entrance and exit bed). Fully reversible.
	150 kg (331 lbs) (Higher pulling weights available).
	Belt guaranteed to autoTrack for life.
	Guaranteed for high-speed films up to ISO 1600 (33 DIN).

***Full autoSensing® without photosensors, moving parts, or footpad.** **Reduces downtime and assures all magazines, envelopes or items are scanned, no matter how thin, or of bag already in tunnel at start-up. Enhances radiation safety.**

X-ray Generator

X-ray tube head:	Self-contained, shielded tank
High voltage rating:	160 kV, 140 kV Operating Voltage
Duty cycle:	100% with sealed oil bath cooling
Beam orientation:	Diagonal
Dose rate per exam:	0.1 mR. Lower doses available.

X-ray Detectors

Surface mounted, multilayer, fully integrated, high frequency, solid state detectors using high speed processors, and Pentium 4 image processing with Single Energy or optional Multi-Energy (M) Color.

Video

Standard with color 17" SVGA monitor. High resolution, flicker-free, .28 dot pitch, low rad. monitor, 1280 x 1024. Single energy color is based on object density. Multi-Energy color option available with available second monitor or flat screen or larger monitor(s), displays organics in orange and inorganics in blue, both overlapping in green and very dense objects in black, and includes Organic and Inorganic Stripping.

Standard Features

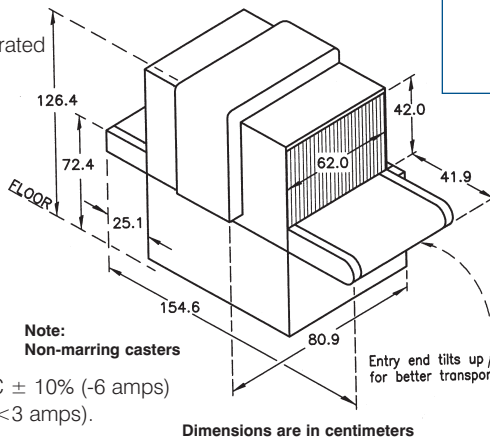
- RealClear®
- autoDensAlert®
- autoTracking®
- autoSensing®
- autoOutline®
- autoScale®
- autoCal®
- Dark & Light enhance
- DensityScan
- Color; Reverse B/W
- High/Low Density & Stripping
- High density
- Help
- Fast (25 second) initial warm-up
- Fully functional, robust, low profile
- Reversible conveyor direction

Options

- Multi-Energy organic and inorganic color & stripping
- autoMatalert®
- Threat Image Projection (TIP)
- Rollerbed(s) or conveyor extensions
- Tropical Humidity Kit
- Image Archiving
- CE marking or UK approved
- Power conditioner, or UPS
- Table or locking monitor hood
- Locking metal keypad cover
- kV, mA meter or item counter
- LCD, dual or larger monitor(s)
- Footpad or optical on/off
- Variable height keypad mount
- Clear Lexan conveyor guard
- Remote, printer or VCR cable
- Built-in Training
- Rentals or leases

Physical Details

Dimensions:	See drawing
Weight:	775 lbs (352 kg) or 975 lbs (442 kg) crated
Construction:	Unibody heavy gauge, epoxy painted steel construction with stainless steel and aluminum trim and accessories. Non-marring casters and leveling jackscrews. Stainless steel command center keypad mountable on top, or optional on side or table.
Environmental Conditions:	Temperature range: 23° to 131° F, -5° to 55° C • Humidity 20% - 95%, non-condensing. Storage to 65° C (149° F)
Electrical Power Requirements:	Consumption: < .6 kVA, 120 volts AC ± 10% (-6 amps) 200, 220, 240, 250 volts AC ± 10% (<3 amps). All at 50 or 60 Hz.



Distributor:

www.controlscreening.com

**World Headquarters
Domestic, Federal
& Corporate Sales**

2 Gardner Road
Fairfield, NJ 07004-2206 USA
Tel: + (973) 276-6161
Fax: + (973) 276-6162
leads@controlscreening.com

Western U.S.

Tel: + (760) 326-9114
Fax: + (760) 326-4734
sw@controlscreening.com

Continental Europe

Saint Jean de Braye, France
Tel: + 33 2 38 61 97 00
Fax: + 33 2 38 61 97 01
eu@controlscreening.com

Canada

Scintrex Trace Corp.

300 Parkdale Ave., Ottawa
Ontario, Canada K1Y 1G2
Tel: + (613) 224-1061
Fax: + (613) 224-2603
info@tracedetection.com

Asia

Singapore
Tel: + 65 9819-2473
Fax: + 65 6234-0813
asia@controlscreening.com

Latina/América Central

Santo Domingo,
Dominican Republic
Tel: + (809) 541-1844
Fax: + (809) 563-6672
latina@controlscreening.com

Middle East

Dubai, UAE
Tel: + 971 50 558 0689
Cell: + 971 50 683 9771
ME@controlscreening.com



www.controlscreening.com
www.tracedetection.com www.fed-labs.com

AUTOCLEAR
ControlScreening.com

Celebrating 65 years of excellence in design & support
Scintrex® • Federal Labs® • CheckGate®
HandWand® • Dynavision® • RealClear®